

# NURO-SW-3B-BA-BL-WP-V1



POWERED BY ILLUMUS. BRANDS

## 3-Button Bluetooth Battery Powered Wall Switch

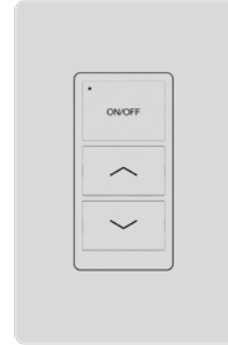
### FEATURES

- 3-Button Bluetooth Wireless Wall Switch
- Battery Powered via Coin Cell Battery (CR2032)
- Bluetooth Transmission Range of up 100ft
- Turn On / Turn Off functions provided
- Allows for Dimming control Up or Down
- Wall Plate Included
- Easily Controlled via Mobile Phone or Tablet with NUROAir app
- Available on iOS and Google Play Stores

LEARN MORE  
BY VISITING  
OUR WEBSITE



SCAN OR  
CLICK HERE



### DIGITAL NAVIGATION

Explore the spec sheet through the links below

[COMPATIBLE FIXTURES](#)
[SUITABLE APPLICATIONS](#)
[RESTORE FACTORY SETTINGS](#)
[LINE DRAWINGS](#)
[BUTTON CONFIGURATIONS](#)
[APP DOWNLOAD](#)


# RoHS

### SPECIFICATIONS: NURO-SW-3B-BA-BL-WP-V1

<b>Input Voltage</b>	1 x CR2032 Coin Cell Battery (DC 3V)
<b>Bluetooth Transmit</b>	100ft Max
<b>Radio Frequency</b>	2.4GHz ± 75MHz

<b>Bluetooth Version</b>	5
<b>Housing Material</b>	UL 94-V0
<b>Location</b>	Indoor use only
<b>Operating Temperature</b>	-18°C to 50°C, -0.4°F to 122°F

<b>IP Rating</b>	IP20
<b>Color</b>	White
<b>Warranty</b>	5 year warranty
<b>Compliance</b>	FCC ID: 2BLDONUROSWTIA

### COMPATIBLE FIXTURES

- All NUROAir Compatible Fixtures

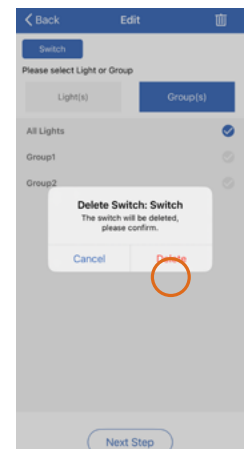
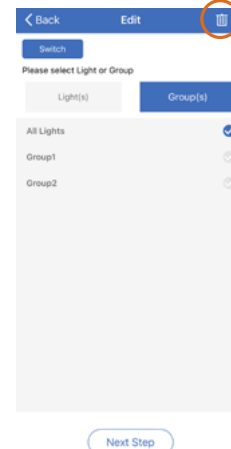
### SUITABLE APPLICATIONS

- Schools
- Warehouses
- Office
- Healthcare
- Auditoriums
- Retail

### RESTORE FACTORY SETTINGS

In the event that the switch does not appear on the Switches page of the app, it may have been previously assigned to another zone.

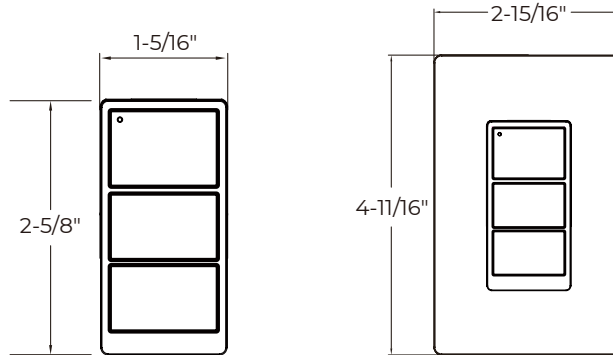
Remove the switch from the app on the Switches page to restore the switch(es) to the factory settings.



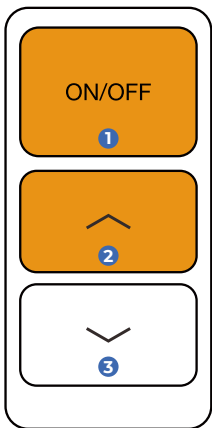
# NURO-SW-3B-BA-BL-WP-V1

## 3-Button Bluetooth Battery Powered Wall Switch


### LINE DRAWINGS

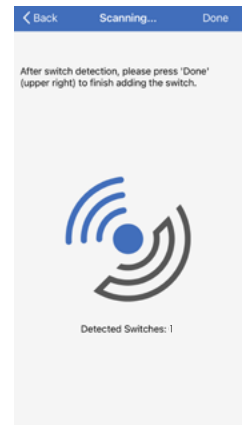


### BUTTON CONFIGURATIONS



- 1 ON/OFF
- 2 Dimming Switch - Up
- 3 Dimming Switch - Down

1. To set the switch to pairing mode, press ON/OFF &  together (as shown in orange on the image to the left), and hold for 3 seconds, then release them to activate the pairing mode.
2. In NUROAir app "Switch" Section, press + icon on the top left or Click to Add button on the bottom to add the new switch to the app.
3. Switches will automatically stop pairing after 30 seconds or when a button is pressed.



### APP DOWNLOAD



Note: All rights reserved. All sizes and specifications are subject to change at any time without notice.